

Eileen Harasimowicz  
Community Liaison

Home Health & Hospice  
12040 NE 128th Street, MS 103  
Kirkland, WA 98034

Mobile: 425.218.6337  
Phone: 425.899.3300  
Fax: 425.899.3228

etharasimowicz@evergreenhealth.com

evergreenhealth.com



## Kathy Bates

CERTIFIED END-OF-LIFE DOULA

206.948.3713  
kathy@compassionatedoula.com  
www.GentlePassageDoulaCollective.com

TRAINING FOR END-OF-LIFE DOULAS  
DEATH CAFE Monthly on the second  
Friday at 12:30 PM, PST

Carrie Blair, CPHT  
CHIEF MARKETING OFFICER

Matrix

cblair@matrxlhc.com  
D: 206.257.3737

1030 Avenue D Suite 2  
Snohomish, WA 98290  
P: 360.863.3009  
F: 360.217.7570



Interim  
HEALTHCARE  
HOME CARE & STAFFING

Lisa Tierney  
Business Development  
Manager

12951 Bel-Red Rd., Suite 190, Bellevue, WA 98005  
Tel:(425) 800-5710 Cell: (425) 546-5402  
ltierney@interimhealthcare.com  
www.interimhealthcare.com/BellevueWA  
Independently Owned and Operated



Joe Baccam, RN  
Executive Director

CAREAGE  
HOME HEALTH

Office: (425) 519-1265  
Mobile: (813) 966-7492  
Fax: (425) 861-7879

jbaccam@careagehealth.com

14450 NE 29TH PL, STE #106 • BELLEVUE, WA • 98007  
234 SW 43RD ST, STE MD • RENTON, WA • 98057

harmonycares.  
medical group

Sheila Clark  
Senior Community Liaison  
Mobile: 206-300-4922  
Fax: 844-399-9486  
shclark@harmonycares.com  
Seattle

PROVIDENCE  
Home and Community  
Care

Dan Williams  
Community Liaison  
Cell: 206.305.2305

Hospice Referrals  
t: 206.749.7701  
f: 206.320.7333  
Daniel.Williams4@providence.org

Home Health Referrals  
t: 425.525.6828  
f: 425.525.6825

EVERETT

DOMINIQUE DUNSMORE  
Community Outreach Specialist  
Home Health

C 360.389.0739  
P 425.747.7747  
F 425.747.4951  
E dominique.dunsmore@sighch.com

SIGNATURE healthcare  
at home  
care where you are

Natasha Jahn

Community Partnership Manager

O: 425.275.5858

F: 425.275.5855

Njahn@everhomehealthcare.com

4610 200th St SW Suite A, Lynnwood, WA 98036

www.everhomehealthcare.com



family resource  
home care

Pam Stone

Regional Manager Business Development  
pams@familyrhc.com

Main: 206.545.1092

Cell: 206.595.1557

10700 Meridian Ave N #401  
Seattle, WA 98133

family resource  
home care

Lauren Pace, MBA

Regional Business Development Manager  
Laurenp@familyrhc.com  
Direct: 253.329.0949

Bellevue	425.455.2004
Everett/Snohomish County	425.361.0044
Olympia	360.522.4024
Renton	425.658.1135
Seattle	206.545.1092
Skagit/Whatcom/Island Counties	425.386.1156
Tacoma	253.761.8019
Woodinville	425.488.7575

how can we help?

how can we help?

CASEY MCCULLY

Business Development Manager

(206) 496-8495 cell  
 (206) 707-8289 office  
 (206) 602-2335 fax  
 caseym@northwestguidedhomecare.com  
 www.northwestguidedhomecare.com



Fedelta  
HOME CARE

Kris Kirwan

Professional Account Executive  
kkirwan@fedeltahomecare.com

O (206) 362-2366 x168  
 F (206) 957-5390  
 M (206) 450-9172

9725 3rd Ave NE, Suite 301  
Seattle, WA 98115



CELINA KERSHNER

Owner/Administrator

(206) 582-3949 cell  
 (206) 707-8289 office  
 (206) 602-2335 fax  
 celina@northwestguidedhomecare.com  
 www.northwestguidedhomecare.com



License #: 00000139

SYNERGY HomeCare

Jennifer Pickard

Executive Director

JenniferPickard@synergyhomecare.com

O: 425-462-5300 | P: 425-559-2869 F: 425-452-8400

12301 NE 10th Place, Suite 102

Bellevue, WA 98005

SYNERGYHomeCare.com

License #: IHS.FS.00000139

SYNERGY HomeCare

Ame Rosenbalm

Client Care Manager

AmeRosenbalm@SYNERGYHomeCare.com

O: 425-462-5300 F: 425-452-8400

12301 NE 10th Place, Suite 102

Bellevue, WA 98005

SYNERGYHomeCare.com

VisitingAngels  
LIVING ASSISTANCE SERVICES

Ben Sanborn  
Care Manager/  
Marketing

Phone: 425-828-4500 Ext. 113  
 Cell: 206-310-1569  
 Fax: 425-828-4505  
 Email: bsanborn@eastsideangels.com

12015 115th Ave NE, Bldg. E, # 105  
Kirkland, WA 98034

www.VisitingAngels.com/eastside  
www.VisitingAngels.com/seattle

America's Choice in Home Care!  
Serving Greater King County

THE KEY  
formerly Home Care Assistance

Esther Cooper

Lead Client Care Manager

c (206) 335-7999  
 o (206) 708-1247  
 ecooper@thekey.com

150 Nickerson Street, Ste 106  
Seattle, WA 98109





**Amy Felton**  
Home Care Liaison



formerly Home Care Assistance

C (206) 573-0176  
T (206) 708-1247  
amy.felton@thekey.com  
TheKey.com



HOME CARE & STAFFING

**Ashley Preskitt**  
Business Development Manager

12951 Bel-Red Rd., Suite 190, Bellevue, WA 98005  
Tel: (425) 300-1350 Fax: (425) 274-3717 Cell: (425) 472-9917  
apreskitt@interimhealthcare.com  
interimhealthcare.com/bellevuewa  
Independently Owned and Operated



**FAIRWINDS**  
**BRITTANY PARK**

— A LEISURE CARE COMMUNITY —

**Barbara Koshar • Sales Advisor**  
bkoshar@leisurecare.com

17143-133rd Ave NE • Woodinville • WA 98072  
P 425.402.7100 • F 425.486.3181 • fairwindsbrittanypark.com

**NANCY WERNER**  
TRANSITIONAL MARKETING SERVICES



**206.240.5058**  
nw@transitionalmarketingservices.com  
914 164th Street SE, #240  
Mill Creek, WA 98012



620 Terry Avenue  
Seattle, WA 98104  
muranoseniorliving.com  
206.202.4620  
206.379.1700  
206.693.3859

Maria Andrews, Sales Manager  
mariaand@merrillgardens.com

Lic #ALF 2521



A CAREAGE COMMUNITY

Loulou Boury  
Move-in Specialist

Office: (425) 373-1161  
Mobile: (253) 225-3026  
Fax: (425) 373-1662  
lboury@patriotsglen.com

1640 148TH AVENUE SE • BELLEVUE, WA • 98007

**CRISTA**  
**SENIOR**  
**LIVING™**

**Carolyn Mahrer**  
Community Relations  
Manager

O 206.289.7858  
C 541.232.8174  
F 206.289.7144

19301 Kings Garden Drive N  
Seattle, WA 98133

cmahrer@crista.net  
cristaseniorliving.org

**Beth Bendlin**

DIRECTOR OF SALES & MARKETING



beth.bendlin@cielseniorliving.com

P: 425.654.4005 ext. 402  
F: 425.654.2680

23845 SE Issaquah-Fall City Rd. | Issaquah, WA 98029



**Colette**  
KEOGH

Director of Community Relations  
belleparkDCR@koelschsenior.com  
C (206) 503-0914

parkbelleharbour.com  
2275 116TH AVE NE | SUITE 400 | BELLEVUE, WA

**The Park**  
AT BELLE HARBOUR

**Jason**  
KITCHEL

Director of Community Relations  
belleparkDCR2@koelschsenior.com  
C (425) 429-5070

parkbelleharbour.com  
2275 116TH AVE NE | SUITE 400 | BELLEVUE, WA

**EMPRESS**

SENIOR LIVING

A LEISURE CARE COMMUNITY

**Anita Danielson • Sales Manager**  
adanielson@leisurecare.com

4020 NE 55th Street • Seattle • WA 98105  
P 206.644.1013 • [empressseniorliving.com](http://empressseniorliving.com)



**FAIRWINDS**

BRITTANY PARK

A LEISURE CARE COMMUNITY

**Sue Donovan • Sales Advisor**  
sdonovan@leisurecare.com

17143-133rd Ave NE • Woodinville • WA 98072  
P 425.402.7100 • F 425.486.3181 • [fairwindsbrittanypark.com](http://fairwindsbrittanypark.com)

**EMPRESS**

SENIOR LIVING

A LEISURE CARE COMMUNITY

**Maia Bonner • Sales Specialist**  
Mbonner@leisurecare.com

4020 NE 55th Street • Seattle • WA 98105  
P 206.644.1013 • F 206.453.5656 • [empressseniorliving.com](http://empressseniorliving.com)



**Mark Ibsen**

SENIOR LIVING ADVISOR

(425) 387-0427

mark@silveragecare.com

www.silveragecare.com

**1ST CHOICE**  
ADVISORY SERVICES



**Irene Austvold**

REGIONAL ACCOUNT MANAGER

CELL: 206-661-4626

MAIN: 800-361-0138

FAX: 800-206-6910

EMAIL: [irene@choiceadvisory.com](mailto:irene@choiceadvisory.com)

WEB: [1stchoiceadvisory.com](http://1stchoiceadvisory.com)

**Barret West**  
Regional Marketing Coordinator



**Retirement**  
Connection

*Ann Schmidt 503 422 6906  
Amy@RetirementConnection.com*

PO Box 820067

Portland, Oregon 97282

Barret@RetirementConnection.com

RetirementConnection.com

503-208-6599

OFFICE: 503.505.5865

FAX: 503.334.2868



Your trusted partner for  
senior living and resources

**Rob Young CSA**  
Certified Senior Advisor®  
President

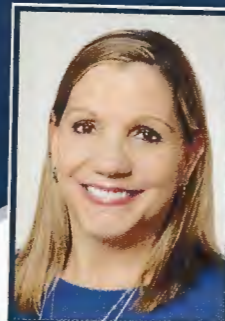
Mobile 425-444-8544

Office 425-526-7111

[RYoung@YourOasisAdvisor.com](mailto:RYoung@YourOasisAdvisor.com)  
[www.OasisSeniorAdvisors.com](http://www.OasisSeniorAdvisors.com)

22525 SE 64th Place, Suite 2266  
Issaquah, Washington 98027

**1ST CHOICE**  
ADVISORY SERVICES



**Terry Fontaine**  
HOUSING & CARE ADVISOR

CELL: 206-708-9646

MAIN: 800-361-0138

EMAIL: [terry@choiceadvisory.com](mailto:terry@choiceadvisory.com)

WEB: [1stchoiceadvisory.com](http://1stchoiceadvisory.com)

**Pamela Martin**

Owner | Senior Living Advisor

425 941 3128

SeniorCareSolutionsNW.com

[Pamela@SeniorCareSolutionsNW.com](mailto:Pamela@SeniorCareSolutionsNW.com)





**JESSICA SEAVERS**

(she/her)

**FAMILY ADVISOR**

P: 206.337.5980 M: 360.561.0132  
E: jessica@tailoredadvisorysolutions.com  
W: www.tailoredadvisorysolutions.com

**BESTEMOR Senior Housing Assistance**  
Assisted Living, Memory Care, Adult Family Homes



Linda Woodall  
Senior Housing Advisor

linda@bestemorhousing.com  
www.bestemorhousing.com  
Cell (425) 510-9165 Fax (425) 620-3703

**Kevin Toscano**

Sales, HCM Specialist

viventium.com | in it with you

c 732.406.0423

ktoscano@viventium.com

**LAURA HENDERSON, JD**

Real Estate Broker & Attorney

(206) 245-8810  
LauraHendersonRE@gmail.com

105 Central Way Suite 202  
Kirkland, WA 98033

**D|R** Design Realty  
Professional Realty Services



**Kimberly Stege**  
Owner

P 206.542.4743  
E info@snokingseniorcare.com

**www.snokingseniorcare.com**  
North Seattle, Shoreline, Edmonds, Lynnwood

a better way to buy a car

**autoconnections**  
seattle

**Janna Stern** 206.234.3773 cell  
206.783.2886 office  
206.782.2258 fax  
920 Elliott Ave W • Seattle, WA 98119  
www.autoconnectionsseattle.com  
janna@autoconnectionsseattle.com



**Lynda Dowell**

Broker, REALTOR®  
Senior Real Estate Specialist  
Certified Negotiation Expert

206.643.7963  
Lynda.RE@kw.com

**KW** GREATER SEATTLE  
KELLERWILLIAMS REALTY  
Each office is independently owned and operated.

lyndadowell.kw.com

**Stacy Schill**  
Vice-President,  
Client Relations & Marketing

stacy@srschill.com

**S.R.Schill & Associates**  
Financial Planners and Advisors

206.275.2700  
206.498.1066 cell

2448 76<sup>th</sup> Ave, SE, Ste 107  
Mercer Island, WA 98040  
www.srschill.com



**Christi Sheridan-Cisler**

Managing Broker  
Realtor

(206) 473-7366  
christi@christicisler.com  
Christicisler.com

11040 Main Street, Suite 200  
Bellevue, WA 98004

**EXCEPTIONAL HOMES** John L. Scott **LUXURY PORTFOLIO INTERNATIONAL**



**Notary Public**

Jessica Seavers

425-667-9719

Mobile Notary  
Serving South  
Snohomish & North  
King Counties

jessica@authenticitynotary.com  
authenticitynotary.com



# profiducia

Trusted Family Partners

**Joanie Taylor** – Fiduciary

office 206.573.5276 | direct 206.300.6627  
3213 W. Wheeler Street #298, Seattle, WA 98199  
joanie@profiducia.com | profiducia.com



Health

**Tina Loveless**

Health Territory Account Executive

o: 503.545.3606  
m: 503.545.3606  
a: 7989 SW Cirrus Dr #22  
Beaverton, OR 97008  
tloveless@adt.com  
Covering AK, ID, MN, ND, OR, SD, WA

**Steve Bentler**  
Retirement Mortgage Specialist



sbentler@c2financial.com  
(425) 894-1040  
228 224th St SE  
Bothell, WA 98021

C2 DRE #01821026  
C2 NMLS #135522  
WA / TX NMLS #107868  
WA Broker NMLS #MB-2470807



secureretirementmortgage.com



**Michael Bray**  
Territory Representative

Office 800.720.7440, opt. 1  
Cell 206.496.9136  
Fax 206.575.6765  
mbray@shieldhealthcare.com

www.shieldhealthcare.com  
615 Strander Blvd. | Tukwila, WA 98188



**David Clemons - CLTC**  
Serving Clients with Long Term Care and Term Life Insurance Solutions since 2002

DAVID CLEMONS  
dgclem@gmail.com

# SilverKite

**Mckenzie Wilson**

Programs Assistant  
SilverKite Community Arts, LLC™

mckenzie@silverkite.us  
360.218.4884  
www.silverkite.us

5508 35th Ave NE  
Suite 100  
Seattle, WA 98105



WINDERMERE REAL ESTATE  
SEATTLE-NORTHLAKE  
17711 Ballinger Way NE  
Lake Forest Park, WA 98155-5517  
Office: 206-364-8100

windermere.com

WINDERMERE REAL ESTATE

Are you tired of being told, "It's all in your head"?  
Why not try something new?



WHERE NEUROSCIENCE MEETS ANCIENT WISDOM  
TO HELP YOU THRIVE

Let's boot the root causes that interfere with  
health, harmony & happiness!

**Kristal-Lynn Archer**  
Business Development Manager

📍 7627 West Bostian Road, Woodinville, WA 98072  
📞 206.472.5993  
✉ kristalynn.archer@monarchlandscape.com  
🌐 www.nlswa.com



**Ruth Gillis**

Reverse Mortgage Loan Originator  
NMLS# 422726



📞 (206) 201-0410  
📱 (425) 319-3493  
📠 (206) 641-3294

✉ rgillis@onetrusthomeloans.com  
🌐 onetrusthomeloans.com/reverse/rgillis



**Renee Bornfreund**  
Realtor, Investor, SRES, Notary

425-301-0378c  
Renee.Bornfreund@exprealty.com  
reneebornfreund.exprealty.com



Kirkland, Washington USA  
425-823-8961 - office  
425-968-7533 - Fax